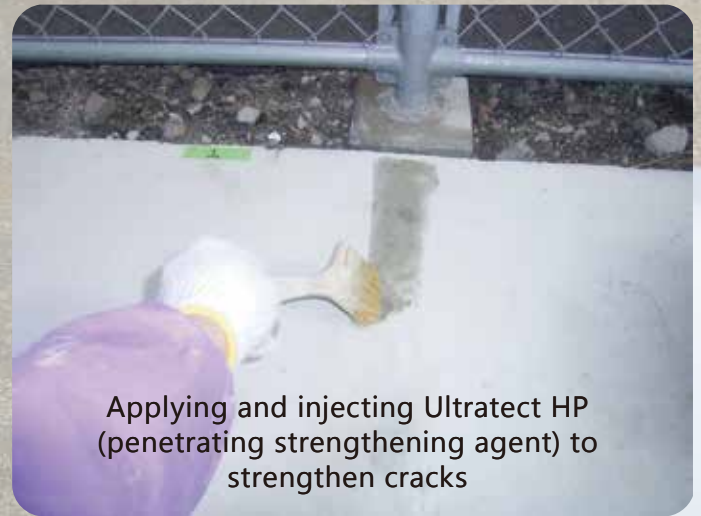


ULTRATECT[®] CR

(CRACK REPAIR METHOD)

Excellent effects such as water stoppage and prevention of efflorescence for concrete structures



ULTRATECT® CR

(CRACK INJECTION REPAIR METHOD for cementitious materials)

Ultratect CR is aimed at repairing cementitious cracks and stopping water leakage.

It has the effect of suppressing the progression and expansion of cracks, preventing peeling, and adding excellent appearance.

Ultratect HP provides superior concrete adhesion for seamless repairs. Its powerful formula prevents plastic shrinkage cracks, peeling, and delamination, enhancing the integration of the finish layer with existing concrete. Additionally, Ultratect HP offers long-term protection by suppressing free lime within cracked concrete structures, effectively stopping water leaks."

Construction Process

Temperature Confirmation:

Ensure the temperature is between 5°C and 45°C before application.

Surface Preparation:

Protect surrounding areas: Cover nearby glass, aluminum, and decorative tiles with masking tape or other protective materials to prevent damage from the repair process.

Clean the surface:

Thoroughly clean the application area to remove any dirt or debris. For heavy soiling, consider using high-pressure washing or scraping techniques.

Note: If acidic cleaning agents are used, ensure proper neutralization is performed before proceeding.

Application:

Apply Ultra-Tect HP: Using a roller, brush, or spray gun, apply Ultra-Tect HP evenly to the entire surface. Pay particular attention to cracks, ensuring thorough filling and coating.

Recommended application rate: 200cc-250cc/m²

Curing: Allow Ultra-Tect HP to cure naturally. In certain environments, consider using heat curing methods to accelerate the process.

Crack Injection:

Material mixing: Combine the following components in a mixer:

- Powder A (Ultrafine cement): 1kg
- Special dedicated resin B (Semi-liquid): 200g
- Water: Approximately 800cc
- Inorganic black pigment: Adjust amount as needed

Note: Color adjustment is recommended before applying the Ultra-Tect Crack Repair Method. If the color appears too light, add more pigment accordingly.

Crack injection: Inject the mixed material into cracks using a syringe or a rubber spatula (2 or more injections recommended).

Surface coating: For surface coating applications, apply the material using a roller or trowel.

Enhanced Protection:

For additional protection of the structure, consider applying Ultra-Tect HP or Ultra-Tect WR* over the entire surface after completing the Ultra-Tect CR Crack Repair Method.