

Penetrating silane/siloxane compound
super water-resistant penetrating agent

ULTRATECT[®] WR

Revolutionary long-lasting protection for concrete and other cementitious materials



Tested according to JSCE-K572 of the Japan Society of Civil Engineers. Rated A-class (Excellent)

*Excellent freeze-thaw
resistance*

*Excellent anti-fouling/
Anti-mold effect*

Excellent salt resistance

Excellent waterproof performance

Prevents efflorescence

Revolutionary long-lasting material for concrete and other cementitious materials

ULTRATECT® WR

Complete Durable Protection for Concrete Structures and Cement Tile Joints

Ultratect WR is a unique silicone/siloxane penetrating waterproofing agent developed using our proprietary synthesis technology. It deeply impregnates and protects concrete structures from salt damage and freeze-thaw cycles. In addition, Ultratect WR also has excellent anti-fouling and anti-mold properties. Therefore, concrete structures will easily maintain their optimal condition for a long time.

Efflorescence inhibition data(Compared with other competing products)

Numbers	hydrophobic agent			複合	hydrophilic agent								organic materials						calculation method	
	①	②	③	⑤	⑥	⑦	⑧	⑨	⑩	⑪	⑫	⑬	⑭	⑮	⑯	⑰	⑱			
pH	10.2	11.1	10.1	UL T WR 10.6	10.8	11.0	10.8	11.3	10.6	11.1	10.6	10.8	9.1	7.7	7.7	9.2	8.6	11.1	10.3	JIS K 0101(1998) 11.1
Ca hardness	5.0	4.0	4.8	3.6	4.0	21	13	24	19	23	22	23	14	25	28	17	23	24	4.4	JIS K 0101(1998) 15.2

According to a test of 19 different waterproofing materials of various companies, we find that Ultratect®WR waterproofing material has the least amount of calcium leaching. It can outperform products on the market and achieve super effective prevention of efflorescence.

Roof Waterproofing Applications



Repair cracks and joints before applying Ultratect WR.
Use Ultratect CR for crack repairs.

Easy to use



Applied to the underside of bridge slabs for waterproofing



Tested at tetrapods



For waterproofing, anti-mold, and anti-fouling of concrete walls

Revolutionary long-lasting material for concrete and other cementitious materials

ULTRATECT® WR

Key Features:

Prevents Weathering and Tile Falls: Ultratect WR effectively prevents weathering and tile falls by sealing and protecting concrete surfaces.

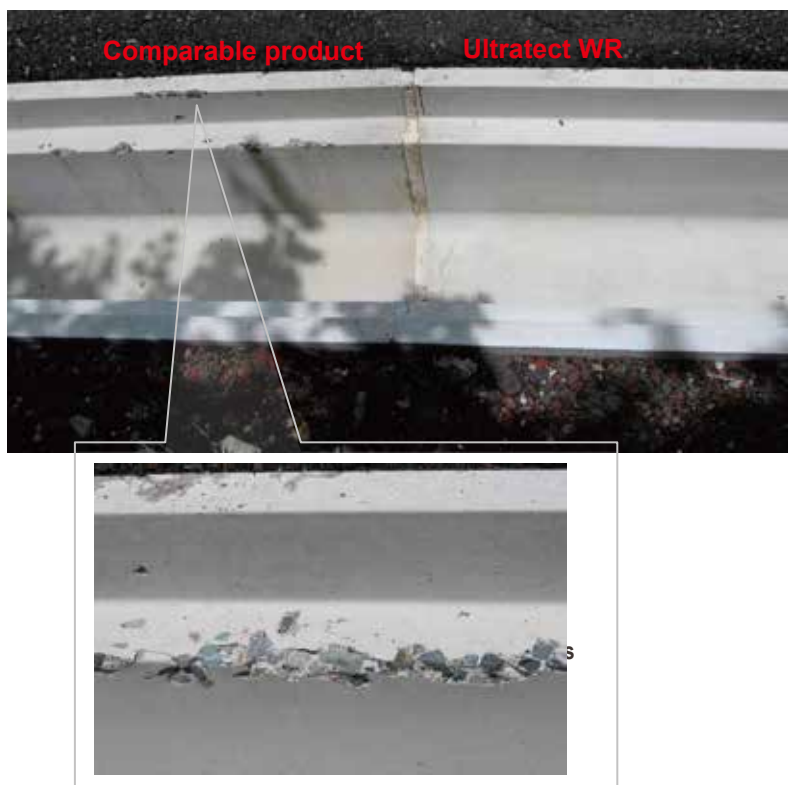
Superior Waterproofing: Ultratect WR provides exceptional waterproofing for any concrete structure, preventing deterioration and ensuring long-lasting integrity.

Excellent Stain, Mold, and Salt/Freeze Resistance: Ultratect WR boasts outstanding stain, mold, and salt/freeze resistance, safeguarding your concrete surfaces from the elements.

Ultratect WR maintains the original appearance of the concrete surface without causing discoloration or alteration.

Additional Notes:

Avoid Acidic Cleaners: Do not use acidic cleaners to clean concrete surfaces treated with Ultratect WR. If acidic cleaners are used, follow up with an alkaline cleaner to neutralize the pH.

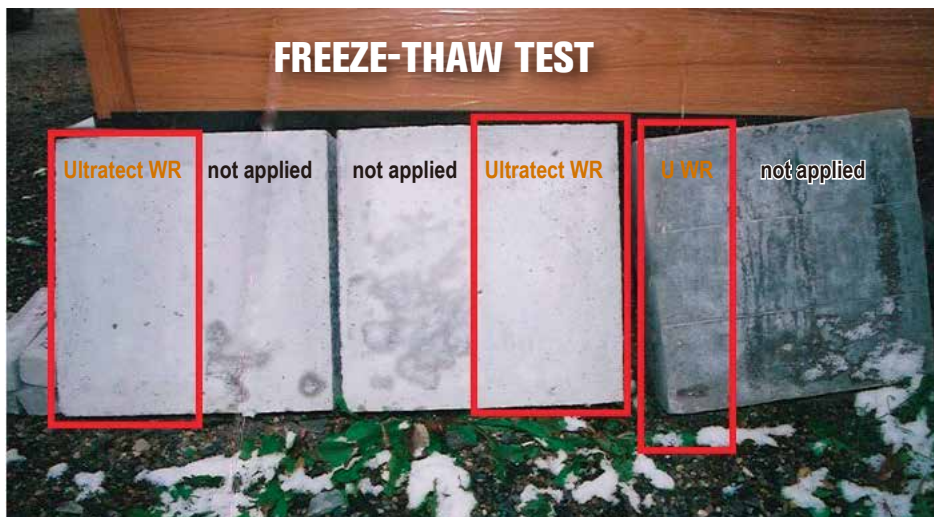


Long-Term Efficacy Proven in Harsh Conditions:

Ultratect WR's effectiveness was demonstrated in a long-term test against a competing product during the installation of new road drainage channels.

As illustrated in the provided image, the competing product suffered severe damage due to freeze-thaw cycles and exposure to deicing salts. In contrast, the surface treated with Ultratect WR remained intact, showcasing its superior protection against harsh weather conditions.

Test Location: Mount Fuji (2-Year Trial)



Atmospheric test (Aomori, Japan)

It can be observed from the pictures that the concrete blocks applied with Ultratect WR did not get affected by freeze and thaw.

Ultratect WR (Work procedures)

1. Wait at least 28 days after the concrete is applied to achieve the best effect.
Allowable construction temperature: Higher than 5°C, lower than 45°C.
2. Cleaning: If cleaning is required, please use high-pressure cleaning. When using detergent, use one with a pH of 7 or higher.
3. Repair cracks in advance. Please use Ultratect CR (Crack Repair) to repair cracks.
4. Application volume: Concrete: 5 to 7 square meters/liter. Ceramic tiles: 10-15 square meters/liter.

Notes:

(1) Do not dilute. Once diluted, the product will solidify into a gel. So do not dilute!.

(2) Use protective masks, protective glasses, and work gloves.

Please read the SDS (Safety Data Sheet) for precautions.



Tested at the seaside
for anti-fouling purposes.

Test results

Water permeability Grade A

Water absorption: Grade A

Moisture permeability grade A

Neutralization test Level A

Chloride ion penetration depth: Grade A

Ultratect WR meets the criteria of JSCE-K572 of the Japan Society of Civil Engineers. Rated A-class (Excellent)

Manufacturer: MICC TEC

Website: www.ultratect.net