

Ultratect® Ceramat

Stucco style coating material with metallic color tones
Super weather resistant inorganic paint/coat for external and internal use

Antico stucco style
Super weather resistant
Developed for external use
Water-proof
Antifouling

Better weather resistance than PTFE paints
Shorten painting time substantially



Non-combustible material certification by the
Ministry of Land, Infrastructure, Transport and
Tourism (JAPAN) Number: NM-5539

Ultratect® Ceramat

Stucco style coating material with metallic color tones
Super weather resistant inorganic paint/coat for external and internal use

Stucco tones that harmonize with people, nature, and the city

Ultratect Ceramat is an stucco paint based on unique recipe of silicates. Its formulation has made it possible for using for both external and internal environment. Its metallic and classy tones perfectly matches with any environments.

Ultratect Ceramat has following superior effects:

Antifouling, antifading, superior water-proof, freeze and salt damage resistance. Furthermore, the coat film breathes which realizes superior protection and environment for interior purposes.

Based on own synthesis technology, it adheres very strongly to the concrete and other cementitious surfaces. Hence, no blistering of the paint film occurs.

Precautions: “Ultratect HP” must be applied to the concrete surface before painting Ultratect Ceramat. This is for assuring a healthy and stable humid condition of the cementitious materials.

Because of its antifouling and antifading realize long-term beautiful façade. Ultratect Ceramat dries quickly and very easy to applicate on walls.

Work example①



Work example②



Work example③



PRODUCT FEATURE

Feature comparison	Ultratect® Ceramat	Organic coatings Acryl, urethane etc
Weatherability	◎ ※	△
Freeze resistance	◎	△
Stain resistance	◎	△
Formaldehyde content	◎ Not detected JIS K 5601-4-1: 2012	△
Incombustibility	◎ Certification number:NM-5539	△
Water permeability	◎ (0.0mm) JIS A 6909:2021	10.0m m or less
Life expectancy	◎No deterioration even after 20 years worth of UV-C test	8-10 years
Chalking resistance	◎	△
Crack resistance	◎	Differs from resin materials

UV-C irradiation test (equivalent to 20 years)

Ultraviolet rays are classified into three types depending on their wavelength: UVA, UVB, and Ultraviolet rays in the UVC range are blocked by oxygen molecules in the air and the ozone layer, so they do not reach the earth's surface. However, UVC is the most powerful ultraviolet as it affects organic matters strongly. For example, UVC can efficiently eradicate corona viruses.

Ultraviolet rays destroy the molecular bonds of coating materials to exterior materials, impairing their original functionality. It has the effect of damaging the appearance by changing (fading) the pigment, which is a chemical compound.

Fluorine compounds break down under UVC and release chlorine atoms.

There are concerns that these chlorine atoms may cause environmental problems such as destroying the ozone layer.

Ultratect Ceramat's high weather resistance is demonstrated by the fact that it shows very little change when exposed to the harshest UVC rays.

At the same time, it can be seen that the environmental impact is lower when compared to fluorine coating materials.



Fluorine silicone paint (Control group)

The specimen on the left is irradiated. The irradiated specimen on the right is yellowing(color fading)



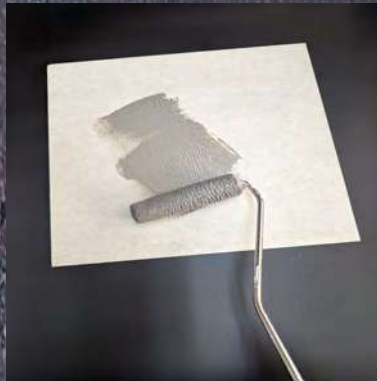
Ultratect Ceramat

The left specimen is not irradiated. The right specimen was irradiated with UV-C. However, no color fading occurred.

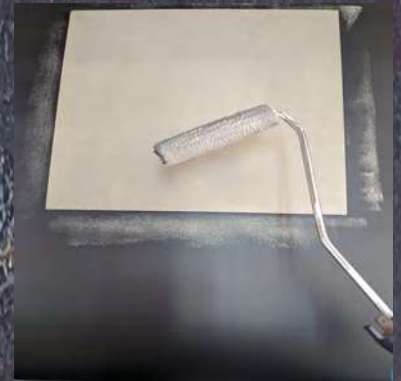
Painting method (Most common method)



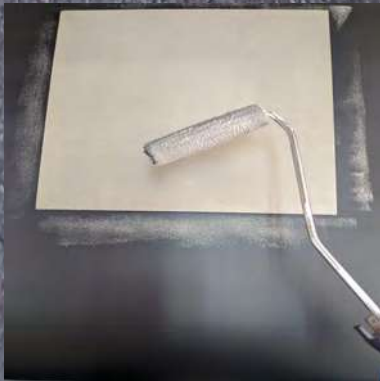
Cement thin plate, roller, rubber spatula



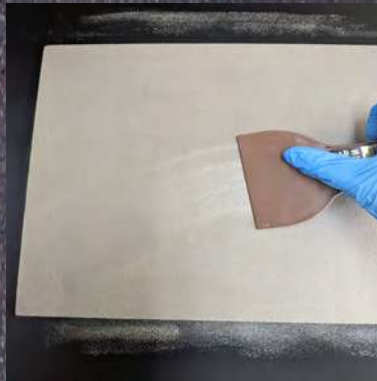
Use the roller.
Coating volume:
 $100\text{g}/\text{m}^2 - 125\text{g}/\text{m}^2$.



If the base is cementitious, the drying time is about 1-2 minutes.



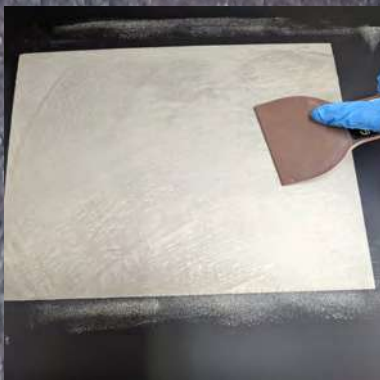
Use the roller again.
Prepare for the rubber spatula immediately.



Use the rubber spatula for making patterns.
Move it left and right alternately



Use the rubber spatula for making patterns.
Move it left and right alternately



Finished



Picture taken the following day.

Ultratect® Ceramat

Stucco style coating material with metallic color tones

Working procedures/painting volume etc

*Concrete/mortar substrate

Curing time
(20°C)

Base adjustment	Repair cracks and junkers in advance. The entire surface requires thin mortar repair. For repairing the cracks,Ultratect CR is recommended to use.	
Primer coating	Apply Ultratect HP before applying the required thin mortar. This is for preventing future cracks from occurring. Ultratect HP is a specially formulated silicate impregnating agent for preventing deterioration of concrete. Especially keeps the concrete in normal humid condition. UltratectHP is also acting as a primer of Ultratect Ceramat.	30 minutes -1 hour
Top coat#1	Coating volume: 0.10~0.15 per square meter Coat with roller etc.	20 - 30 minutes
Top coat#2	Coating volume: 0.10~0.15 per square meter Coat with roller etc.	Protect with curing sheet for 6 hours +

Applicable substrate:

Concrete, mortar and other cementitious materials. Plasterboard

Precaution (Interior use) : Use a putty on the plasterboard. The putty must be of gray color. Hence, do use a black liquid pigment manufactured by us. Do use a mixer for mixing the liquid pigment together with putty.

Not applicable substrate: Melamine board, existing paint film, iron, wood,caulking ,glass, cloth.

Precaution for use:

It is strongly recommended to apply Ultratect HP before applying Ultratect Ceramat in order to prolongen the lifetime of the paint film of Ultratect Ceramat.

The putty, which is usually of white color, must be added black liquid pigment manufactured by us. Otherwise the finished paint work will not be as expected.

There are many ways of applying Ultratect Ceramat. Please check our presentation on how to paint Ultratect Ceramat.

Note:

- Please close the lid of paint vessel when not in use.
- The paint film dries very quickly. Use the rubber laver almost immediately after applying with the roller.
- Clean the substrate well before application. Do not use acidic detergent.
- Do not paint when the substrate is wet.
- If you are applying multiple colors, please prepare tools (rubber spatula, roller, brush, etc.) for each color.

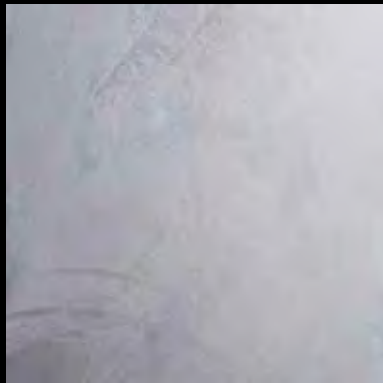
Manufacturer:
MICC TEC CO., LTD
www.ultratect.net

Ultratect[®] Ceramat

COLOR SAMPLE

※*actual color tones will vary depending on the environment

M



No. 1-A gray



No. 1-B gray



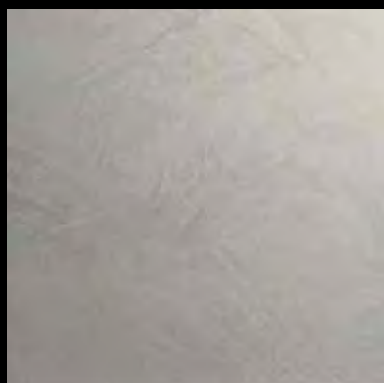
No. 2 gray



No. 3 gray



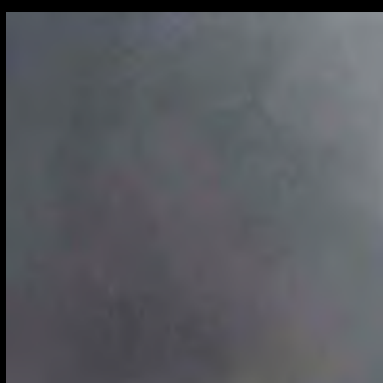
No. 4 gray



No. 5 gray



No. 6 gray



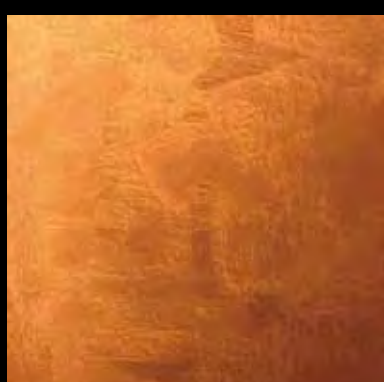
No. 7 dark gray



No. 8 black



No. 9 Golden leaf



No. 10 RedOrangeGold



No. 11 BronzeGold

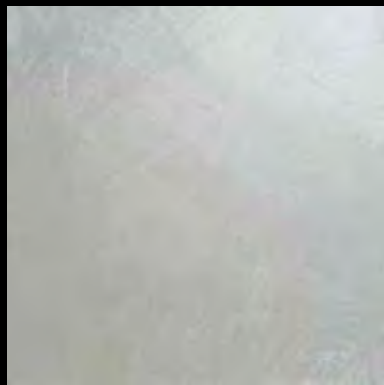


No. 12 OrangeGold

The color sample above was taken outdoors (sunlight). When installed indoors, the color expression will change when exposed to fluorescent lights or light bulb colors (red, white, etc).

COLOR SAMPLE

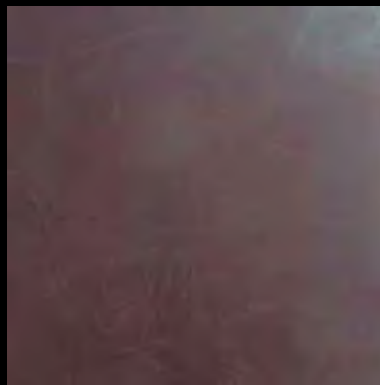
※*actual color tones will vary depending on the environment



No. 13-A MossGreen



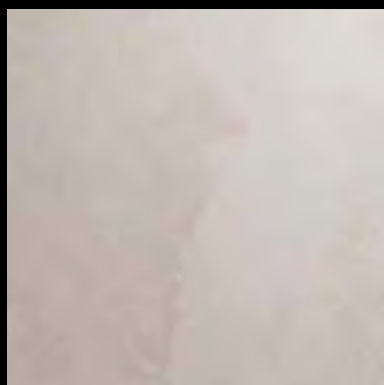
No. 13-B BasilGreen



No. 14WineRed



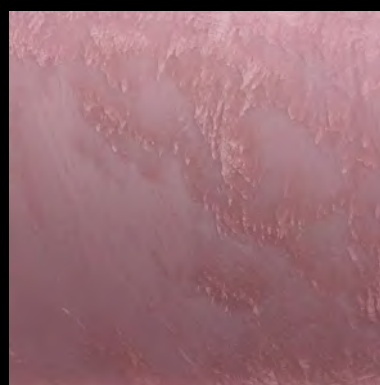
No. 15RedViolet



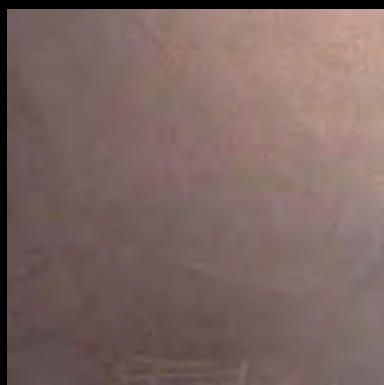
No. 16SkinToneColor



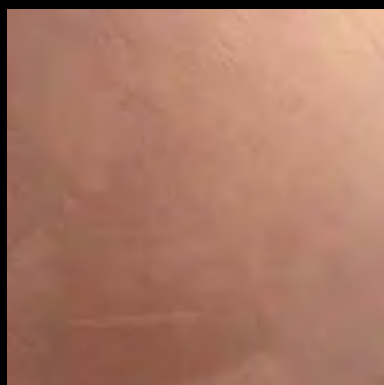
NO. 16B ROSE PINK



NO.(16-C)MIDDLE DARK PINK



No. 17CoffeeBrown



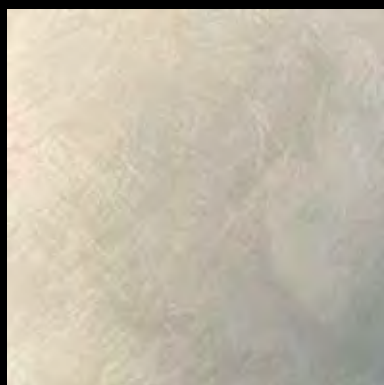
No. 18光悦茶KOUETSUCHA



No. 19 黄檀染KOUROZEN



No.20 赤朽葉AKAKUCHIBA



No.21 白銅色 HAKUDOIRO



No.22 深縹 KOKIHANADA



No.23 瑠璃紺 RURIKON



NO.24 LILAC

The color sample above was taken outdoors (sunlight). When installed indoors, the color expression will change when exposed to fluorescent lights or light bulb colors (red, white, etc).

COLOR SAMPLE

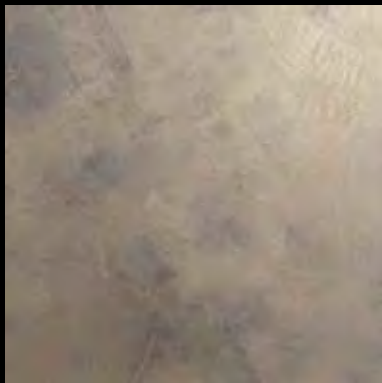
※*actual color tones will vary depending on the environment



NO.23+2 Milky way



No.24+23MR TwinkleLilacBlue



No.17+11TCoffeBrownBronze



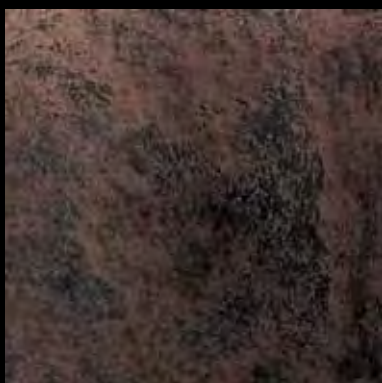
No.8MR21MR WhiteBlackMarbl



NO.18+19 DoubleBrown



No.8+21



No.8+17



NO.20-NO.10



No.17-23-9-10



NO.17+19 DoubleBrown



No.8 - 22



No.8 - 13B



No.8MR(TwinkleBlack)



NO.10-NO.9DoubleGold



NO.13B-NO.11 ChinaJadeGold



NO.18-NO19-NO.11

The color sample above was taken outdoors (sunlight). When installed indoors, the color expression will change when exposed to fluorescent lights or light bulb colors (red, white, etc).