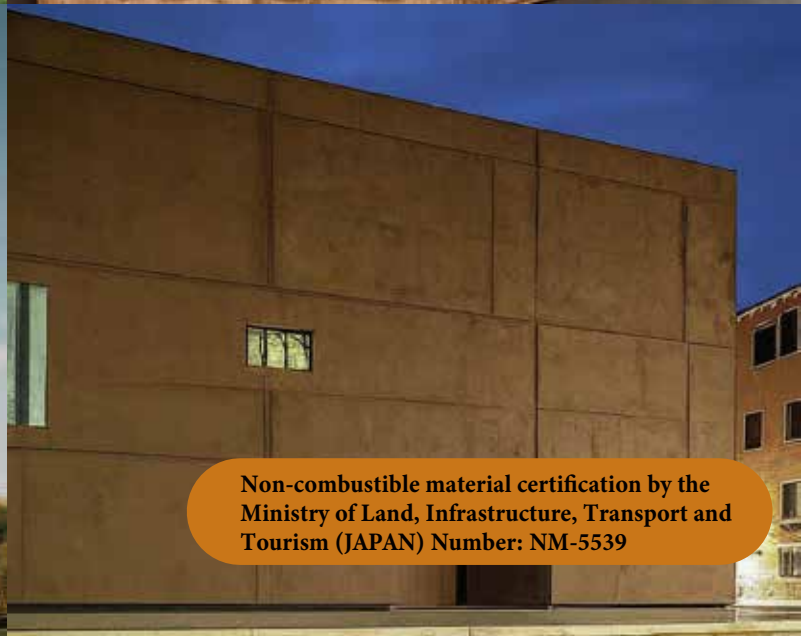


Ultratect® Ceramat

Stucco style coating material with pastel color tones
Ultra High Durability Water based Silicate Coating Material



Next Generation inorganic Coating

Ultratect® Ceramat Stucco Style

Plaster style that harmonizes with people, nature, and the city

Ultratect® Ceramat is a stucco coating based on a unique recipe of silicate. We have made it possible to create a formulation that can be applied to both external and internal environments. The metallic and luxurious colors match any space.

Ultratect® Ceramat offers the following benefits:

Excellent stain resistance, fading resistance, water resistance, frost damage resistance, and salt damage resistance. Furthermore, since the paint film breathes, it provides excellent protection and environmental performance for interior applications. A unique synthetic technology provides extremely strong adhesion to cementitious surfaces such as concrete. Therefore, no blistering of the paint film occurs.

Note: Be sure to apply "ULTRATECT HP" to the concrete surface before painting ULTRATECT® CERAMAT. This is to ensure a healthy and stable wetting condition of the cementitious material. It also has anti-fouling and anti-fading properties, ensuring a beautiful appearance for a long time.

Exposure observation①



Before paint works(2017). A site where the exterior walls have deteriorated due to dirt and mold.



Ultratect®HP being painted.
By modifying the base, paint film blistering can be prevented.
Also for reducing water leakage and preventing concrete leakage.

Exposure observation②



Photographed in December 2023.
The antifouling and anti-mold has lasting effects.

Ultratect[®] Ceramat

PRODUCT FEATURE

Feature comparison	Ultratect [®] Ceramat	Organic coatings Acryl, urethane etc
Weatherability	◎ ※	△
Freeze resistance	◎	△
Stain resistance	◎	△
Formaldehyde content	◎ Not detected JIS A 6909:2021	△
Incombustibility	◎ Certification number:NM-5539	△
Water permeability	◎ (0.0mm) JIS A 6909:2021	10.0m m or less
Life expectancy	◎ No deterioration even after 20 years worth of UV-C test	8~10 years
Chalking resistance	◎	△
Crack resistance	◎	Differs from resin materials

UV-C irradiation test (equivalent to 20 years)

Ultraviolet rays are classified into three types depending on their wavelength: UVA, UVB, and Ultraviolet rays in the UVC range are blocked by oxygen molecules in the air and the ozone layer, so they do not reach the earth's surface. However, UVC is the most powerful ultraviolet as it affects organic matters strongly. For example, UVC can efficiently eradicate corona viruses.

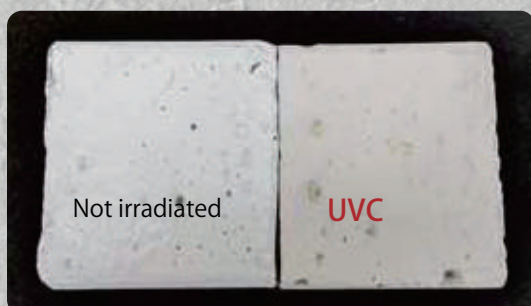
Ultraviolet rays destroy the molecular bonds of coating materials to exterior materials, impairing their original functionality. It has the effect of damaging the appearance by changing (fading) the pigment, which is a chemical compound.

Fluorine compounds break down under UVC and release chlorine atoms.

There are concerns that these chlorine atoms may cause environmental problems such as destroying the ozone layer.

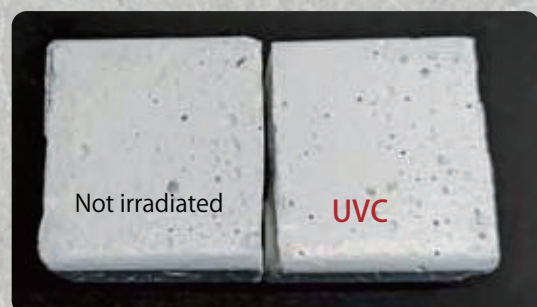
Ultratect Ceramat's high weather resistance is demonstrated by the fact that it shows very little change when exposed to the harshest UVC rays.

At the same time, it can be seen that the environmental impact is lower when compared to fluorine coating materials.



Fluorine silicone paint (Control group)

The specimen on the left is irradiated. The irradiated specimen on the right is yellowing(color fading)



Ultratect Ceramat

The left specimen is not irradiated. The right specimen was irradiated with UV-C. However, no color fading occurred.

Ultratect® Ceramat

Working procedures/painting volume etc

*Concrete/mortar substrate

Curing time
(20°C)

Base adjustment	Repair cracks and junkers in advance. The entire surface requires thin mortar repair. For repairing the cracks,Ultratect CR is recommended to use.	
Primer coating	Apply Ultratect HP before applying the required thin mortar. This is for preventing future cracks from occurring. Ultratect HP is a specially formulated silicate impregnating agent for preventing deterioration of concrete. Especially keeps the concrete in normal humid condition. UltratectHP is also acting as a primer of Ultratect Ceramat.	30 minutes -1 hour
Top coat#1	Coating volume: 0.10~0.15 per square meter Coat with roller etc.	20 - 30 minutes
Top coat#2	Coating volume: 0.10~0.15 per square meter Coat with roller etc.	Protect with curing sheet for 6 hours +

Applicable substrate:

Concrete, mortar and other cementitious materials. Plasterboard

Note:

- Please close the lid of paint vessel when not in use.
- The paint film dries very quickly. Use the rubber laver almost immediately after applying with the roller.
- Clean the substrate well before application. Do not use acidic detergent.
- Do not paint when the substrate is wet.
- If you are applying multiple colors, please prepare tools (rubber spatula, roller, brush, etc.) for each color.



In 2017. Before coating with Ultratect Ceramat

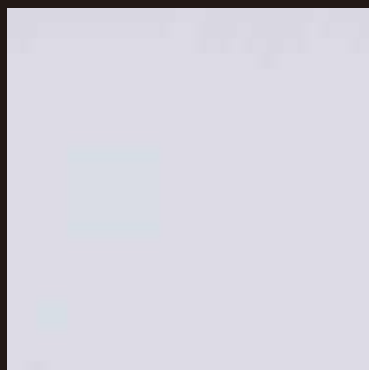


6 years after. No stain

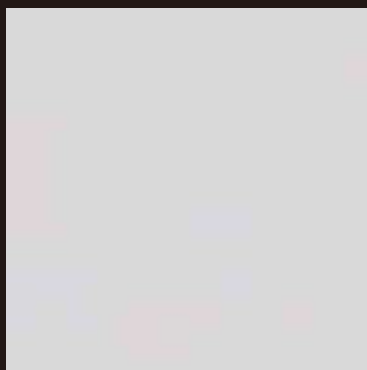
Manufacturer:
MICC TEC CO., LTD
www.ultratect.net

COLOR SAMPLE

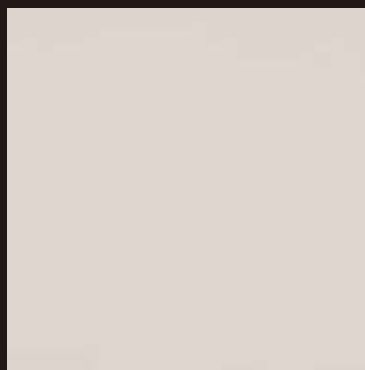
※*actual color tones will vary depending on the environment



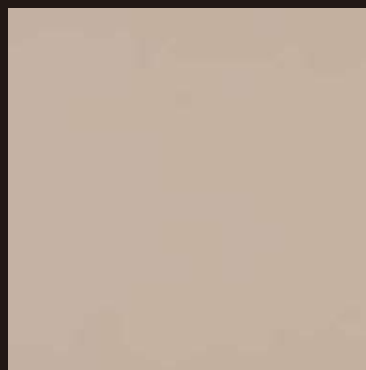
No.1



No.2



No.3



No.4



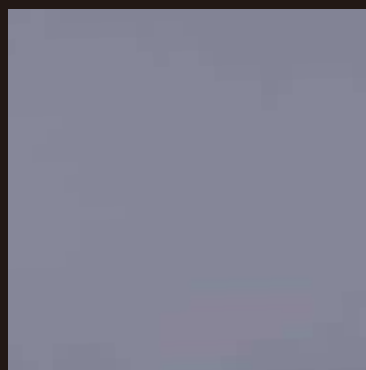
No.5



No.6



No.7



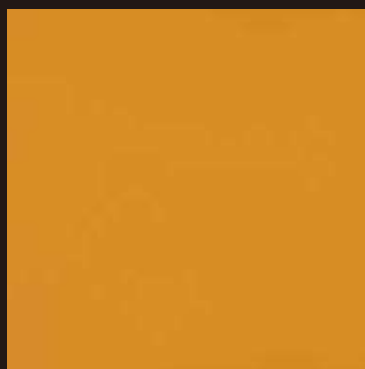
No.8



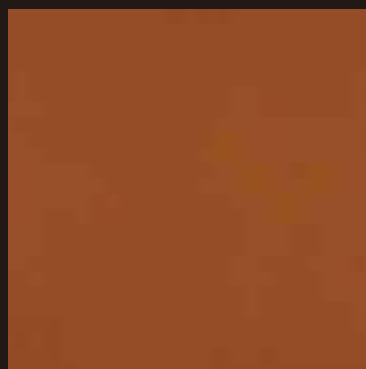
No.9



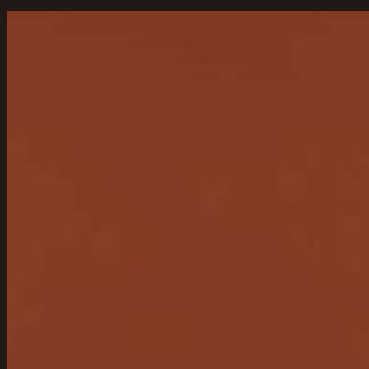
No.10



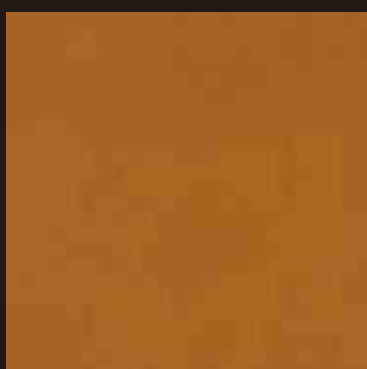
No.11-A



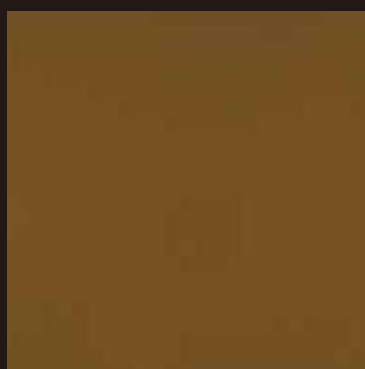
No.11-B



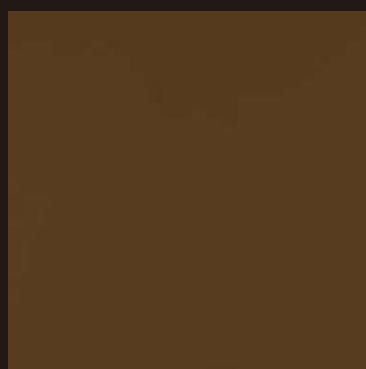
No.11-C



No.11-D



No.12-A



No.12-B

The color samples above were taken indoors. Color expression may change when exposed to sunlight

COLOR SAMPLE

※*actual color tones will vary depending on the environment



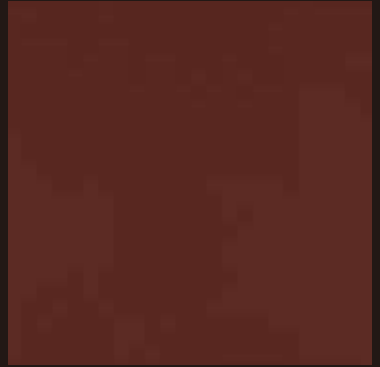
No.12-C



No.13-A



No.13-B



No.13-C



No.13-D



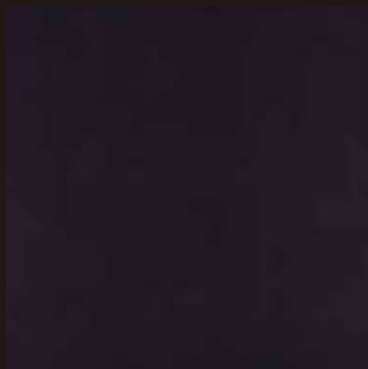
No.14-A



No.14-B



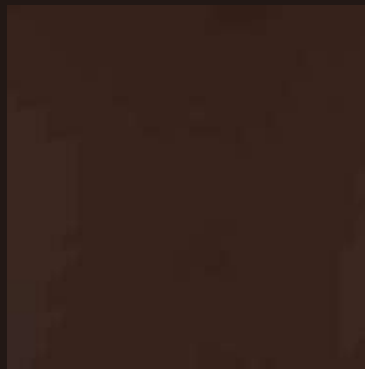
No.14-C



No.15-A



No.15-B



No.15-C



No.15-D

The color samples above were taken indoor. Color expression may change when exposed to sunlight

COLOR SAMPLE (複色)

※*actual color tones will vary depending on the environment



No.1 + No.6



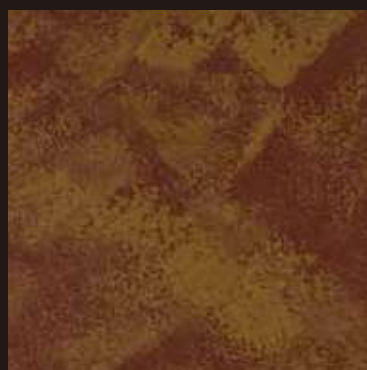
No.11-C + No.11-B



No.13-B + No.11-D



No.13-C + No.11-D + No.15-B



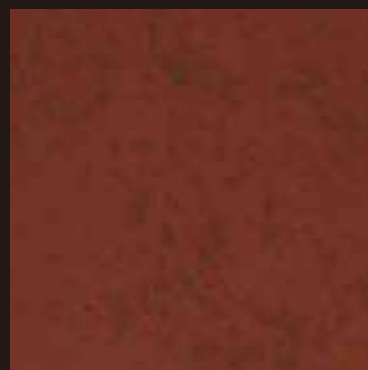
No.13-C + No.12-A



No.14-A + No.11-D + No.14-A



No.14-A + No.15-A + No.5



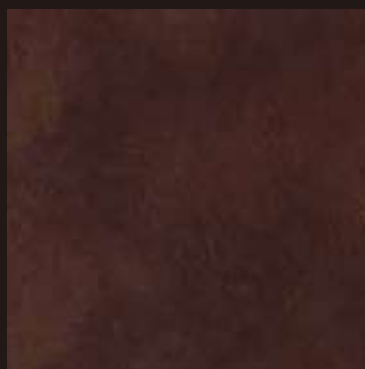
No.14-C + No.13-A + No.14-C



No.15-A + No.14-A



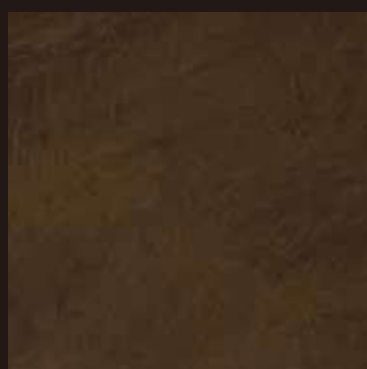
No.15-B + No.12-B



No.15-B + No.13-B



No.15-B + No.14-B



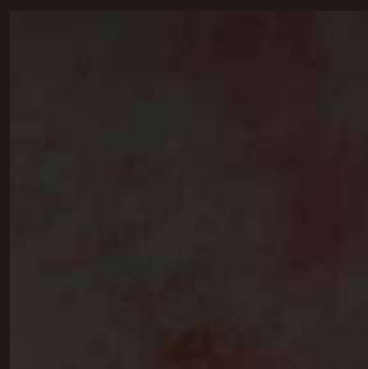
No.15-C + No.12-C



No.15-C + No.14-C



No.15-D + No.5



No.15-D + No.15-B

The color samples above were taken indoors. Color expression may change when exposed to sunlight

Ultratect® Ceramat Stucco Style

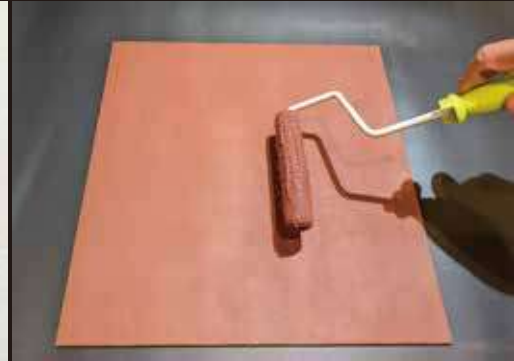
How to apply multi colored patterns



Cement panels, coating materials, rollers, sponge



Apply evenly with a roller
Color number: 13-C



Apply two times
Color number: 13-C



After drying, brush the second color onto the sponge.
Color number: 12-A



Apply in pats. Apply a thin layer.
.Applying too much will spoil the aesthetic appearance.



Application completed.
See image below left.
Color number: 13-C/12-A



Color number: 13-C/12-A
3 days after application
Note: The color will change depending on the color of the bulb and the amount of adjustment.



Color number: 15-B/13-B
3 days after application
Note: The color will change depending on the color of the bulb and the amount of adjustment.